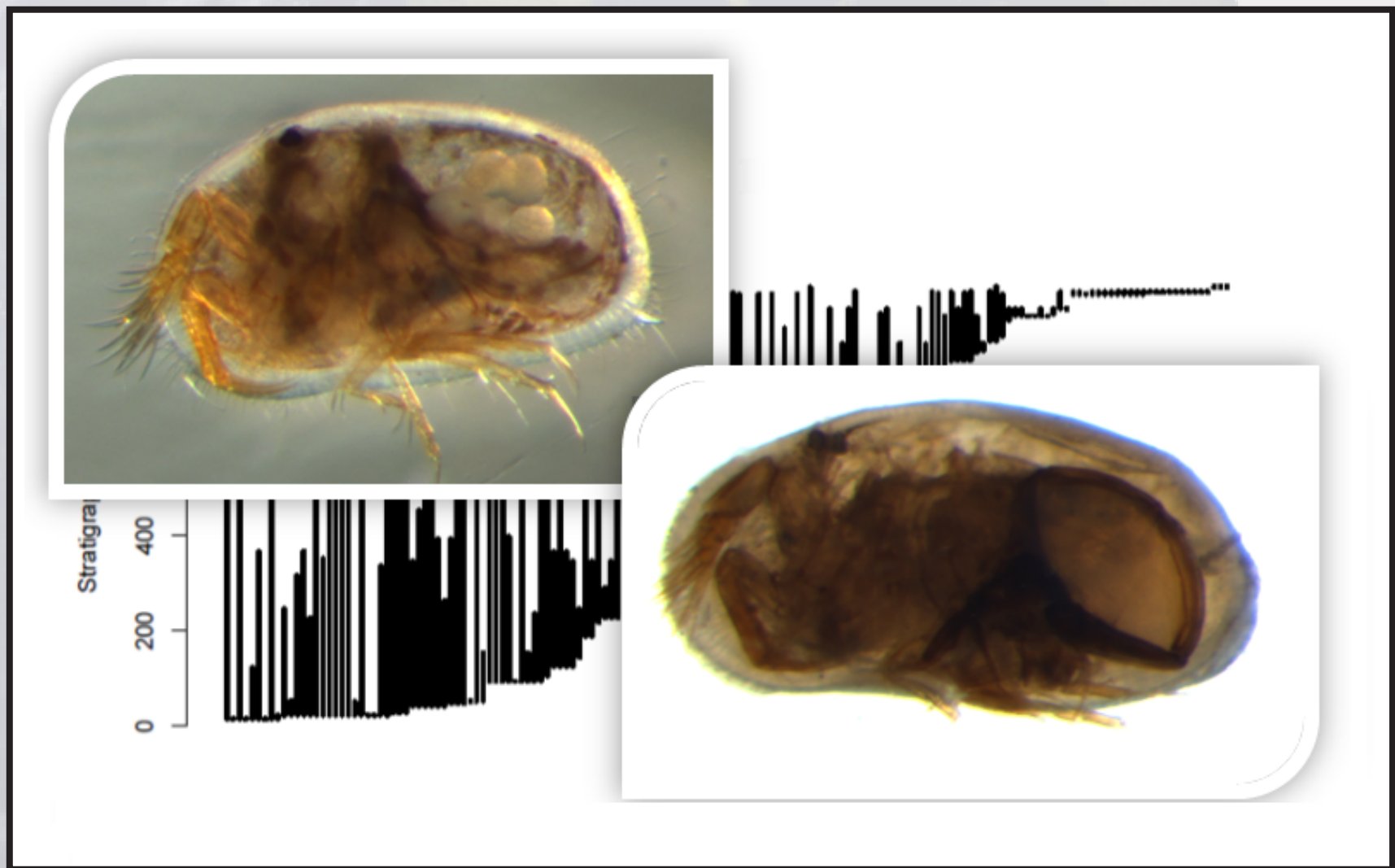


SOLID EARTH SEMINARS

Sexual selection as a determinant of species extinction in cytheroid ostracods



WHAT'S THIS
ABOUT?

Sexual selection relates to investment in traits that help organisms compete for mates. However, investment in expensive traits that do not directly increase survival may elevate extinction risk. By leveraging the rich fossil record of cytheroid ostracods, where the sexes can be assigned even in fossils, I tested sexual selection as a driver of extinction selectivity. I verified that species with increased male investment had higher probability of extinction.

MARIA JOÃO
MARTINS

📍 FCUL 6.2.46
FEBRUARY 27
WEDNESDAY - 1H PM