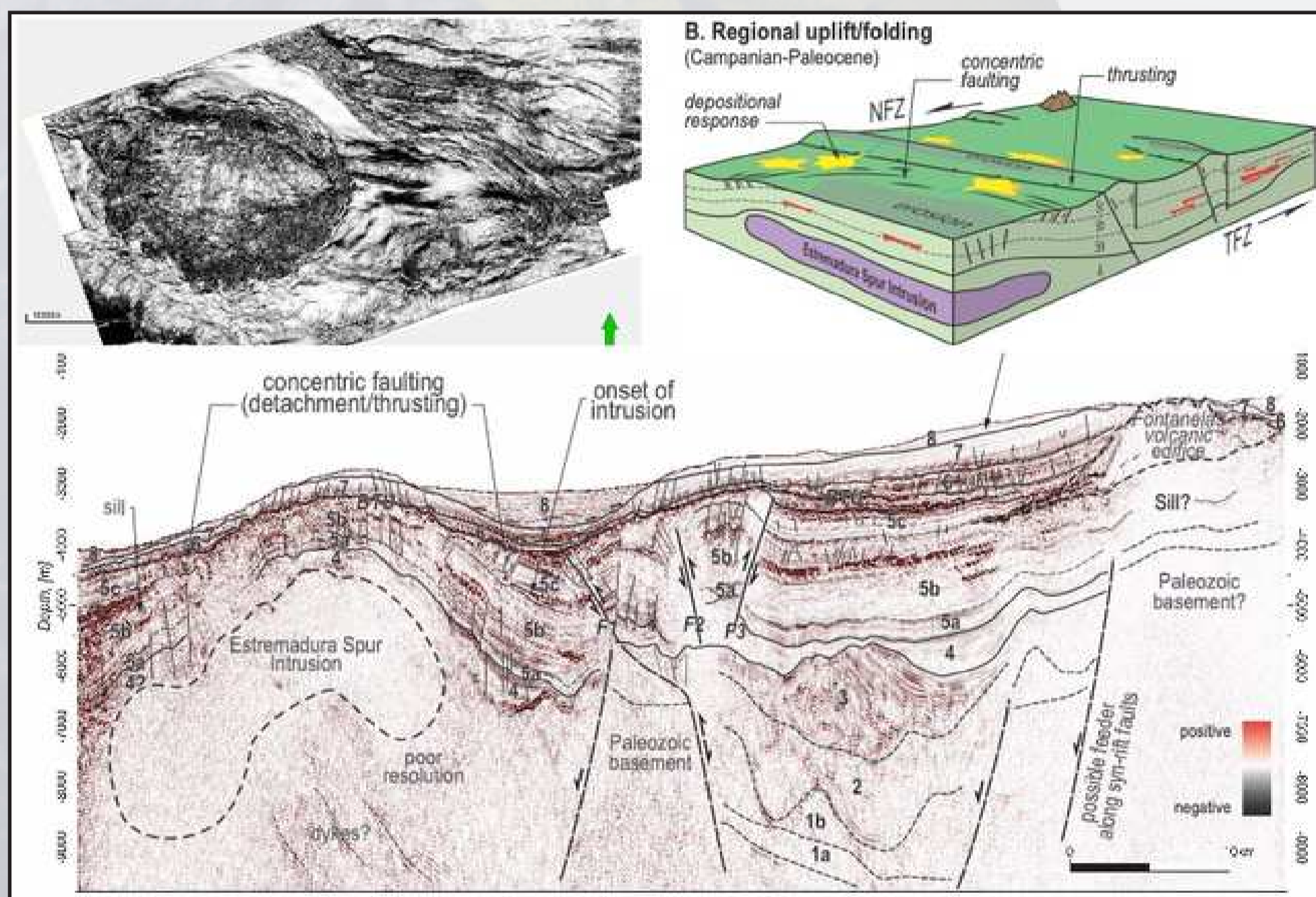


# SOLID EARTH SEMINARS

## INTERPLAY INVERSION TECTONICS AND MAGMATISM DURING THE LATE CRETACEOUS ON THE WEST IBERIAN MARGIN



**WHAT'S THIS ABOUT?**

Late Cretaceous magmatism on the West Iberian Margin is widespread and extends offshore onto a larger province, which on the Estremadura Spur includes the evidence of a > 20 km long laccolith (the Estremadura Spur Intrusion), the Fontanelas volcano and its associated plumbing systems, as observed on high-resolution seismic data. The integrated seismic-stratigraphic and structural analysis of the post-rift sequences allows to reveal that multiple tectono-magmatic events have resulted in decoupled deformation of the Cretaceous to Tertiary strata, ultimately allowing to establish the timing, magnitude and distribution of inversion.

**ZOOM**



**Ricardo Pereira**

(Instituto Dom Luiz, FCUL)

**DECEMBER 2**  
**Wednesday: 13:00**

**PASS: RG234\_SES**

<https://videoconf-colibri.zoom.us/j/89018419156>