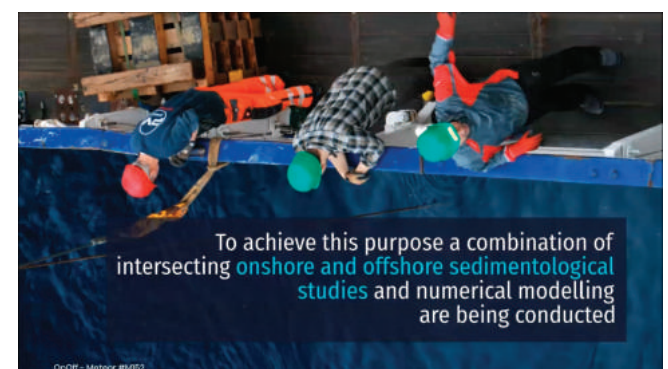
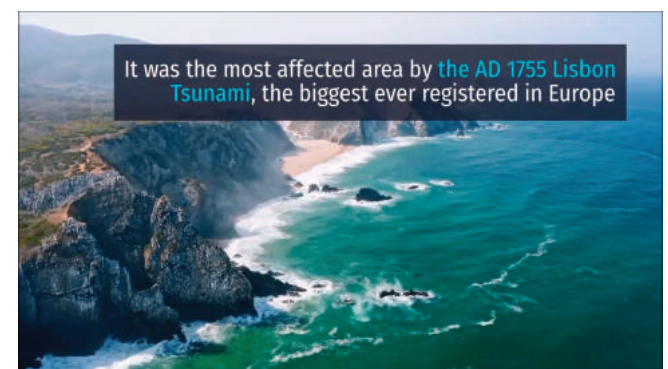
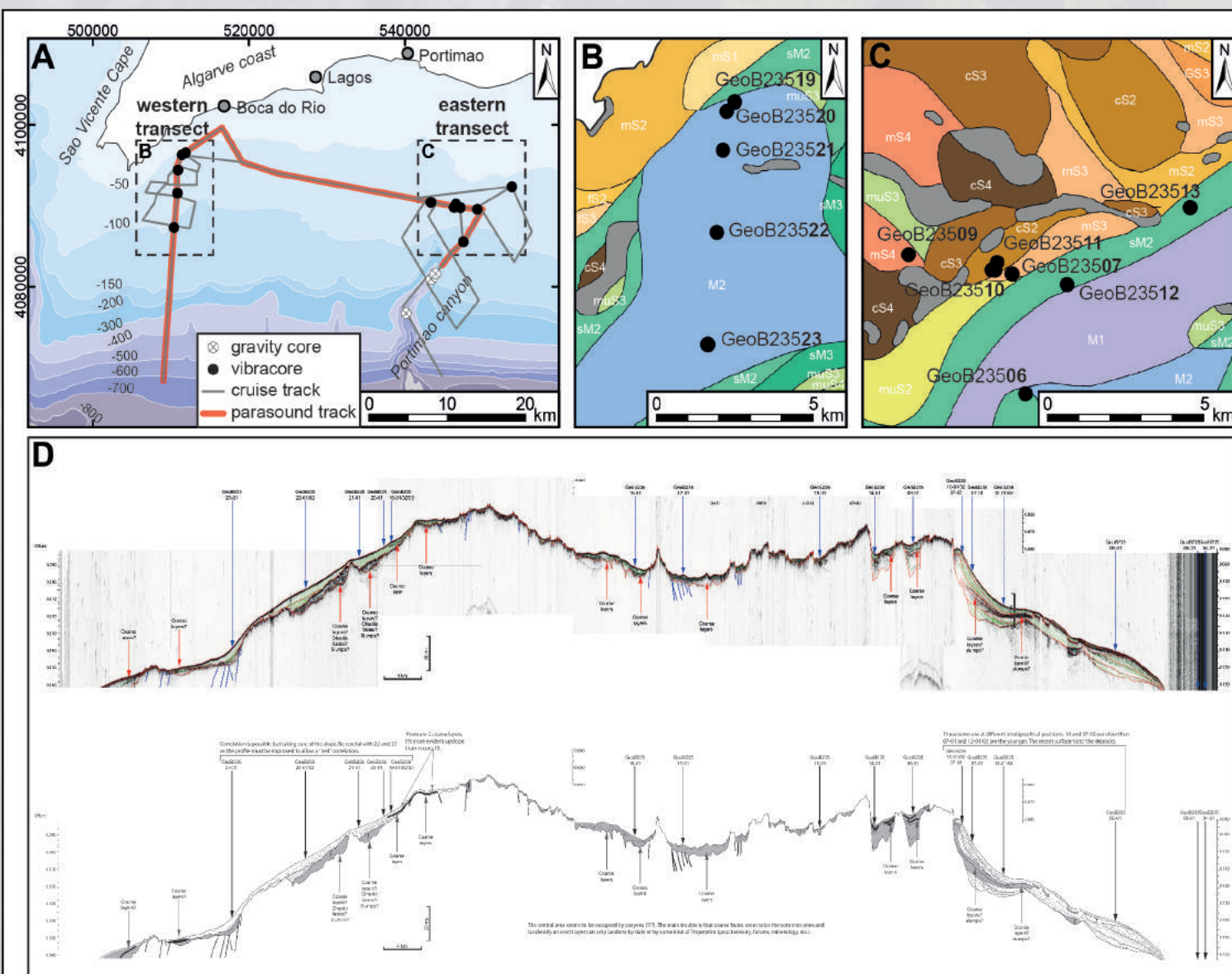


SOLID EARTH SEMINARS

KEY CHALLENGES ON COUPLING ONSHORE AND OFFSHORE SEDIMENTOLOGICAL RECORD OF EXTREME INUNDATIONS



The sedimentological record is crucial to accurately assess past intensities and return periods of extreme inundations (tsunami, storms and floods). Over recent years the shallow offshore record has proved to be a surprisingly rich and diverse archive. Nevertheless, coupling this record with the onshore extensive database is pivotal to reconstruct past extreme events rigorously. Departing from several case studies along the Atlantic coasts (Portugal, Scotland, United States and Brazil) this presentation will focus on critically analysing results obtained so far but it essentially aims to raise debate on the key challenges ahead. Greater detail will be devoted to present preliminary geochemical, sedimentological, geophysical and micropalaeontological results from SW Iberia where return period for these hazards is being tentatively revised. Finally, we will also discuss how the geological data can be passed to end-users in a comprehensive and useful manner to ultimately improve hazard assessments.

ZOOM



Pedro J. M. Costa

(IDL & Departamento de Ciências da Terra da Universidade de Coimbra)

April 21

Wednesday: 13:00

PASS: RG234_2021

<https://videoconf-colibri.zoom.us/j/89018419156>