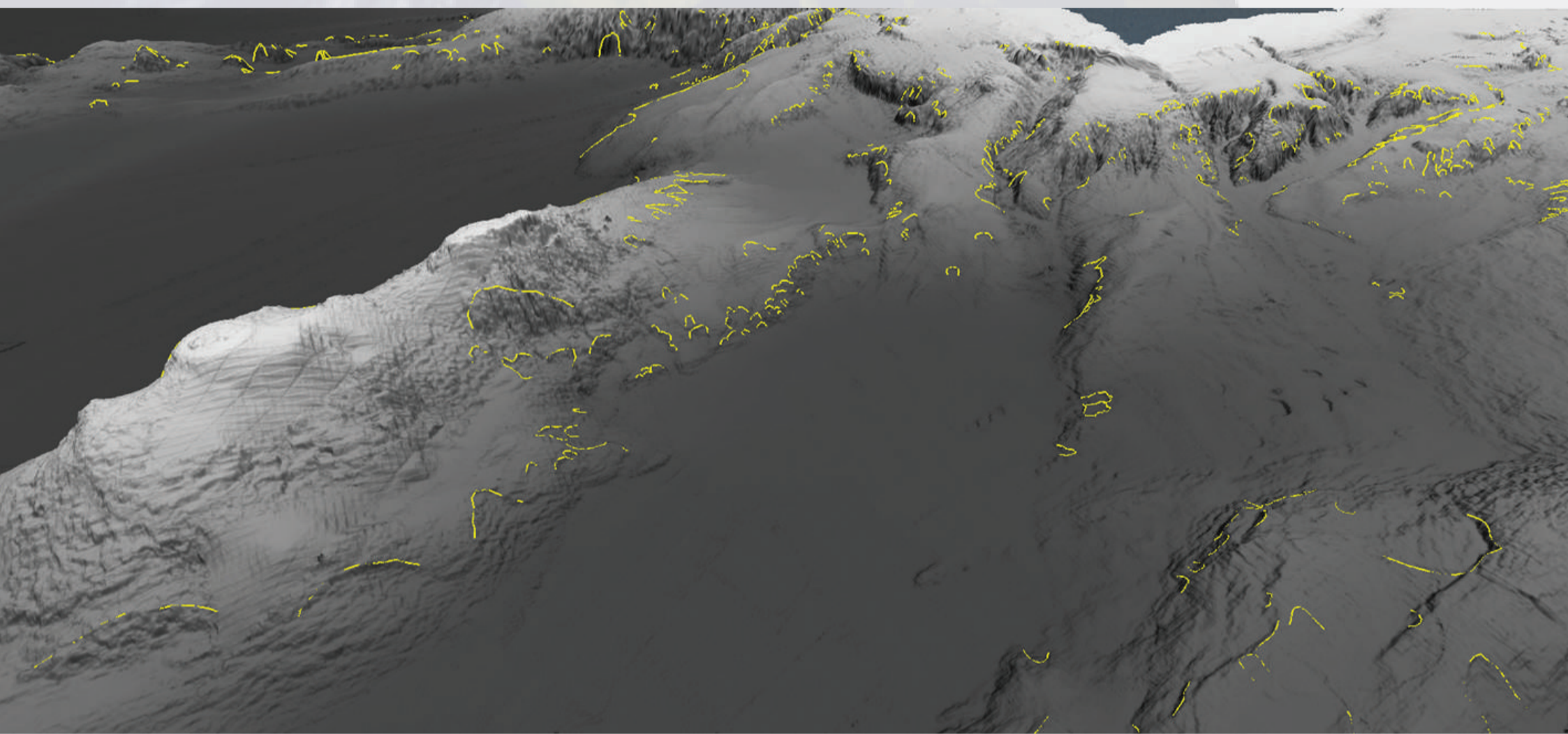


SOLID EARTH SEMINARS

MORPHOMETRIC TRENDS OF SUBMARINE LANDSLIDES OFFSHORE PORTUGAL



WHAT'S THIS ABOUT?

Submarine landslides are ubiquitous geohazards in marine environments occurring at multiple scales. Increasing efforts have been made to catalogue and categorise submarine landslides in comprehensive databases, aiming to better understand their preconditioning and trigger factors. However, studies on submarine landslides offshore Portugal are limited, but it is crucial and timely to close this knowledge gap. The MAGICLAND project undertook a detailed investigation of submarine landslides offshore Portugal, having produced an open-access dataset with the location and morphometry of over 1550 seafloor occurrences. This work brings new insights on submarine landslide distribution in the understudied west and southwest Iberian continental margin, complements previous inventories made for nearby regions, and provides data relationships with wider applications for submarine landslide databases.

ZOOM



Davide Gamboa

(IPMA and Instituto Dom Luiz, Portugal)

May 04

Wednesday: 13:00

PASS: 2021_RG234

<https://videoconf-colibri.zoom.us/j/89018419156>