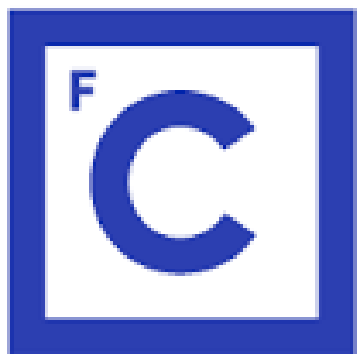




Facts and figures about research@CIÊNCIAS

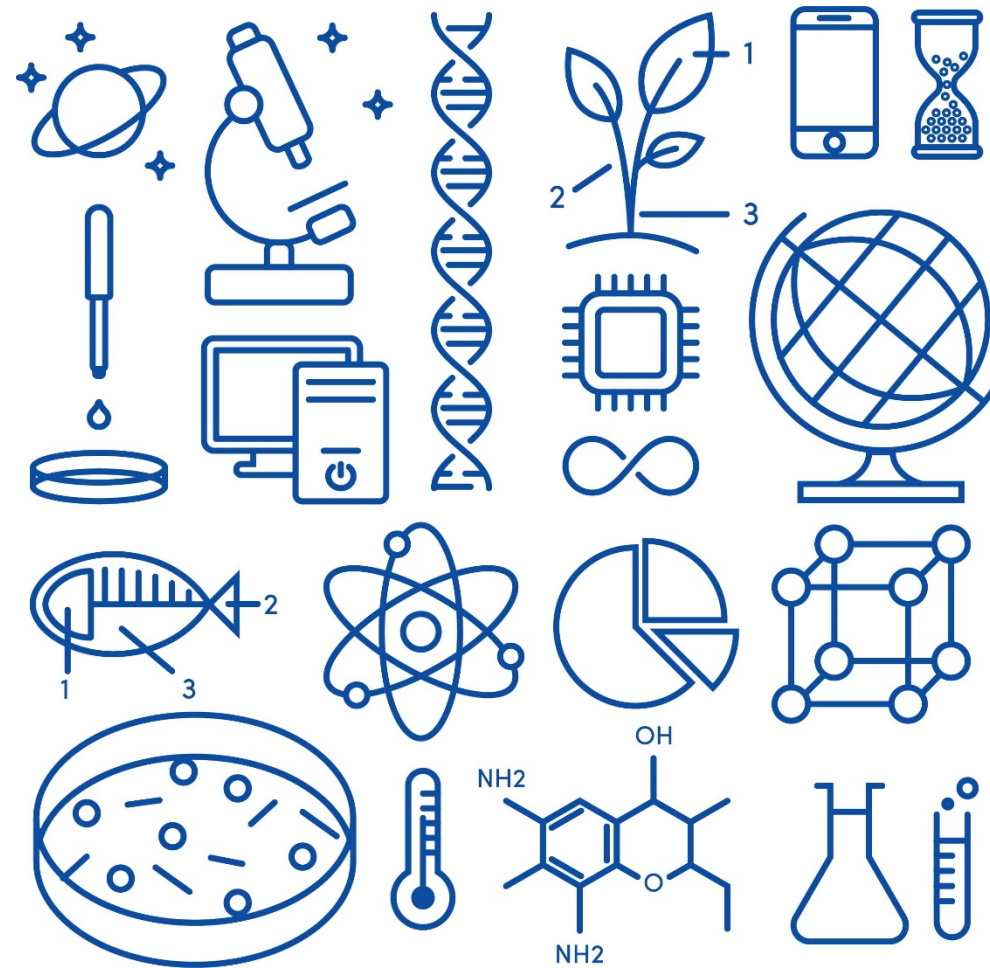
Margarida Santos-Reis

(Vice Dean for Communication and Image)

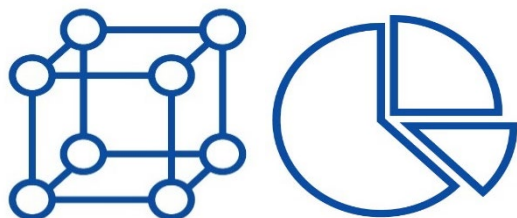


**Ciências
ULisboa**

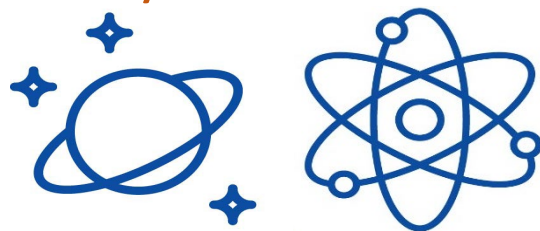
RESEARCH @ CIÊNCIAS: facts and figures



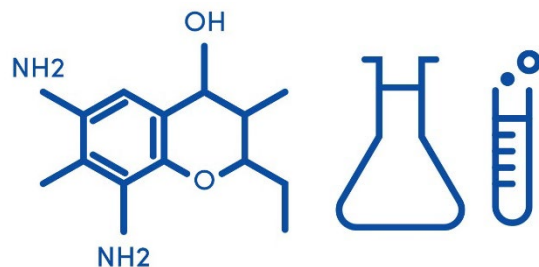
Math



Physics



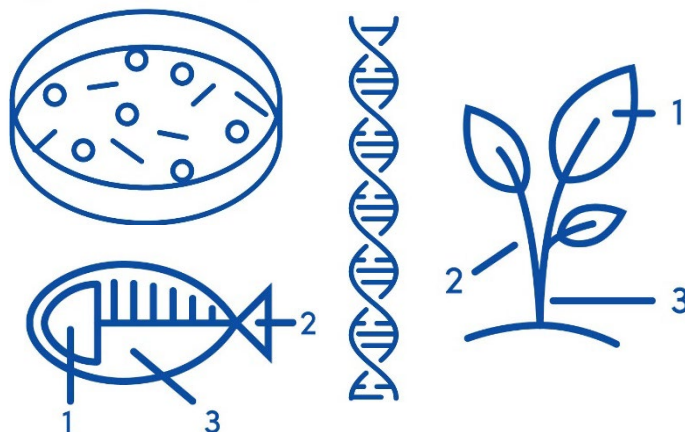
Chemistry



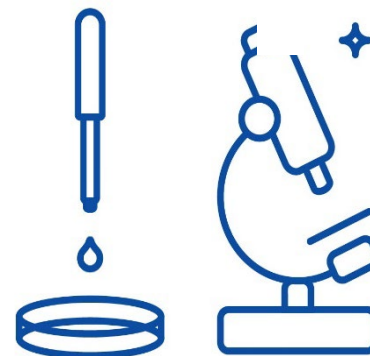
Earth Sciences



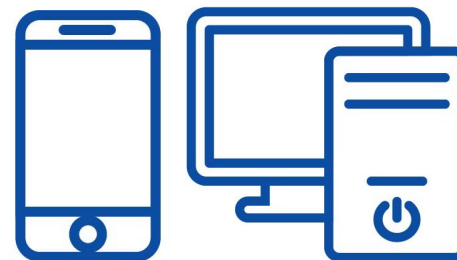
Life Sciences



Health Sciences



Computer Sciences



History and Philosophy of the Sciences



73735 45963 78134 63873
02965 58303 90708 20025
98859 23851 27965 62394
33666 62570 64775 78428
81666 26440 20422 05720

15838 47174 76866 14330
89793 34378 08730 56522
78155 22466 81978 57323
16381 66207 11698 99314
75002 80827 53867 37797

99982 27601 62686 44711
84543 87442 50033 14021
77757 54043 46176 42391
80871 32792 87989 72248
30500 28220 12444 71840



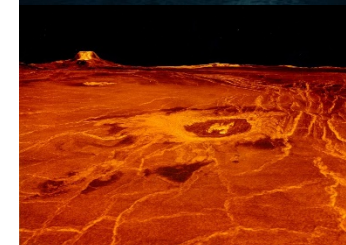
From random numbers to artificial intelligence

From molecules to ecosystems

From the Arctic to the Antarctic

From planet earth to the outer world

From theory to practice



Analytical techniques, lab and field experiments, modelling and numerical simulations



From the deep sea
hydrothermal vents to
mountain lakes

Mediterranean
Woodlands

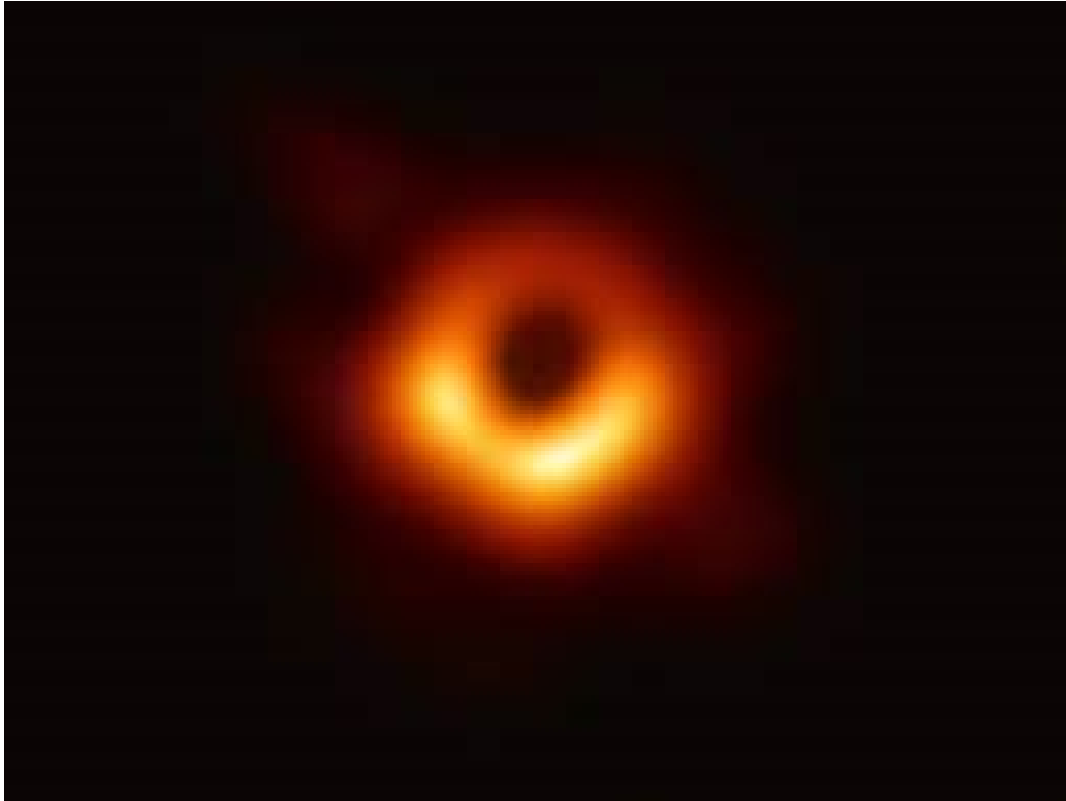


African
Savannahs

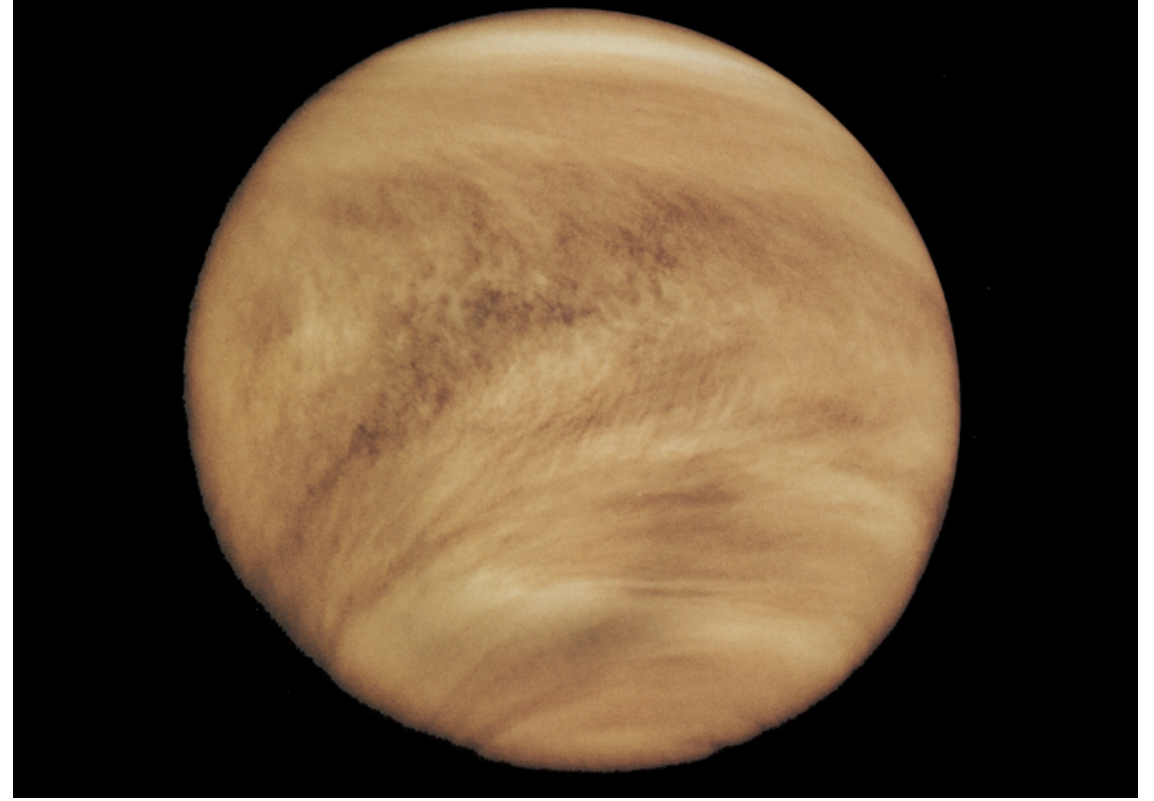


Tropical
Rainforests





Black Hole – Event Horizon Telescope



Pioneer Venus Orbiter (NASA)

19

R&D Units



418

Academics



157

Researchers



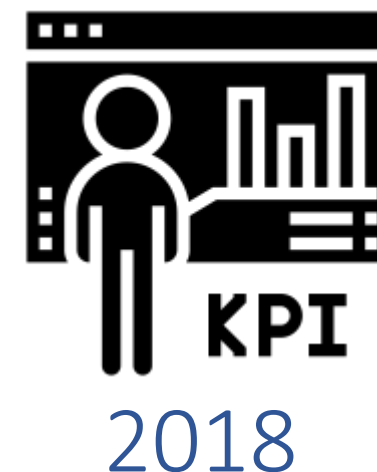
DRIVEN BY EXCELLENCE

90% of units rated as
Excellent or Very Good, well
above 64% at national level

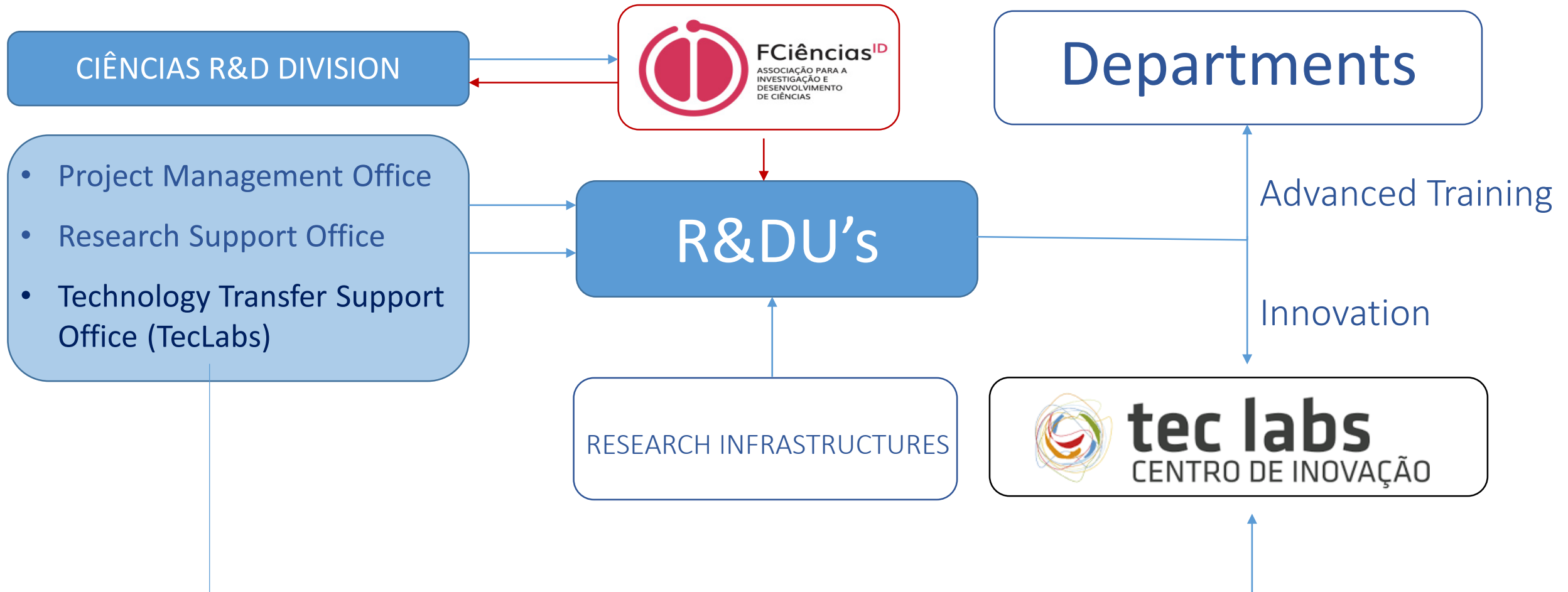
23% of ULisboa publications and
highest publication rate per capita



567	Funded Projects (national and international)
1361	Scientific articles published in international journals
>50%	Q1 and Q2 journals
85	Books and book chapters
15	ERCs (3 granted, 1 waiting decision, 2 submitted) + Marie Curie (9)
7	COST (1 coordination, 6 LOS)
489	Cooperation Protocols (187 new)



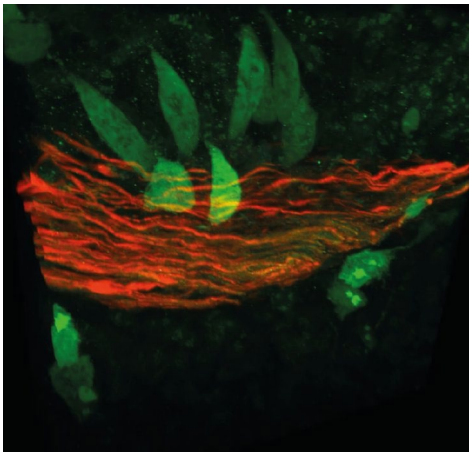
<https://ciencias.ulisboa.pt/pt/biblios>



Mass Spectrometry



BioIMaging Lab



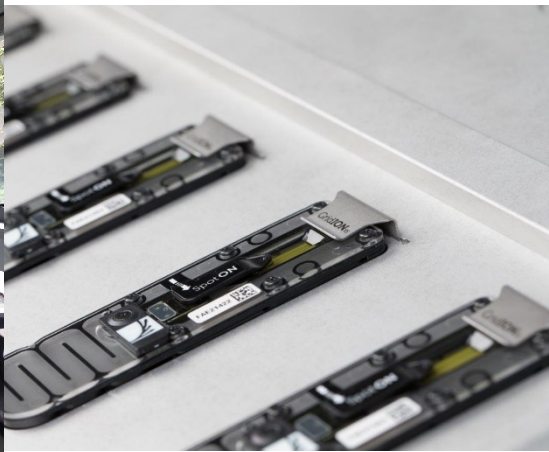
Bioterium



Stable Isotopes



Genomics



Field Station



43 MSc Courses

24 PhD Programs

54 PhD Theses (defended 2018)

349 MSc Theses (defended 2018)

1109 MSc Students (2018/2019)

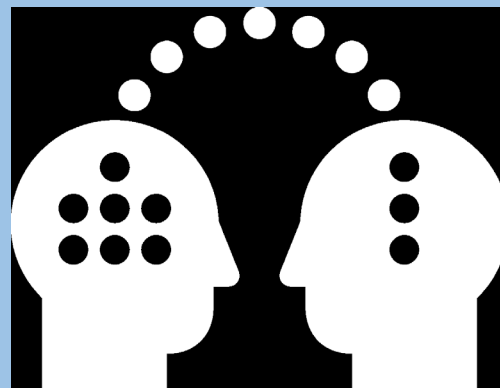
441 PhD Students (2018/2019)



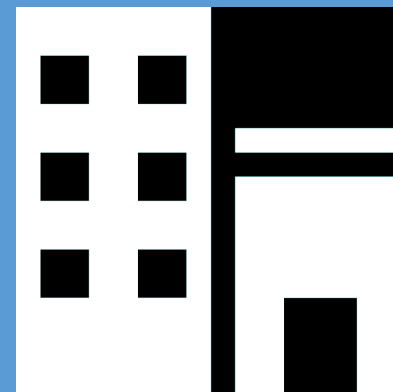


2014-2019

- 32 Invention Communication
- 2 Contracts for Patent Licensing
- 4 Spin-offs (+2 Proto Companies)
- 6 Provisional patent submission
- 1 National Patent
- 2 International Patents



KNOWLEDGE
VALORISATION



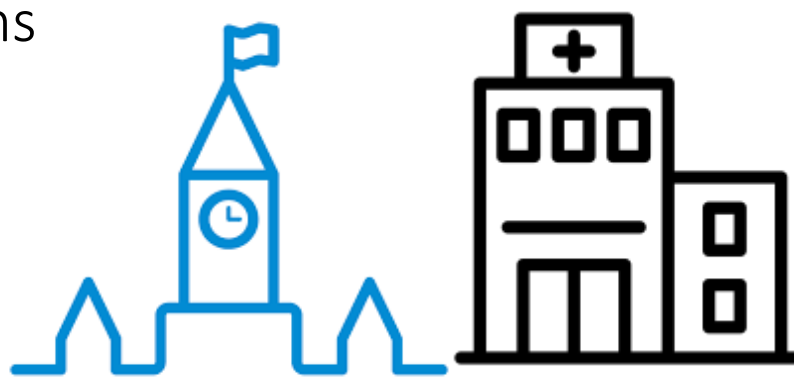
INCUBATION



Universities and Research Institutions



Companies



Government, Municipalities and Hospitals



Mapping
Protocols
(2018)

2017

567 (253 new)

ongoing projects 2018

≈28 M€

executed in 2017

≈25 M€

approved in 2018

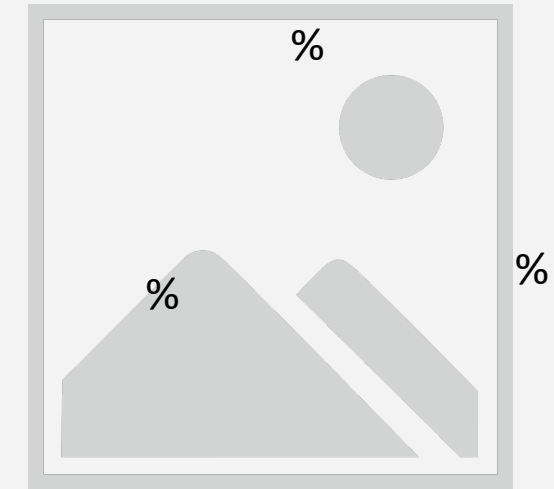
H2020: 2.6M€

P2020: 18.3M€

FCT: 1.3M€

Outros internacionais: 1.2M€

Outros nacionais: 1.6M€



■ SB ■ PT funds ■ EU funds ■ Other international funds ■ Other funds



European Space Agency



European Southern
Observatory



European
Organization for
Nuclear Research



eLTER RI

Integrated European
Long-Term Ecosystem
Critical Zone &
Socio-Ecological Research
Research Infrastructure



Portuguese Platform of BioImaging (PPBI)
Portuguese Mass Spectrometry Network (RNEM)
Stable Isotope Laboratory (LIE/SIIAF)
Large-Scale Informatics Systems Laboratory (LASIGE)



9 research infrastructures on the PT Roadmap

Biological and Medical Sciences

Portuguese Mass Spectrometry Network (RNEM)

Portuguese Platform of Bioluminescence (PPBI)

Environmental Sciences

Collaboratory for Geosciences (C4G)

Portuguese Coastal Monitoring Network (CoastNet)

Portuguese E-Infrastructure for Information and Research on Biodiversity (PORBIOTA)

European Multidisciplinary Seafloor and Water Column Observatory (EMSO.PT)

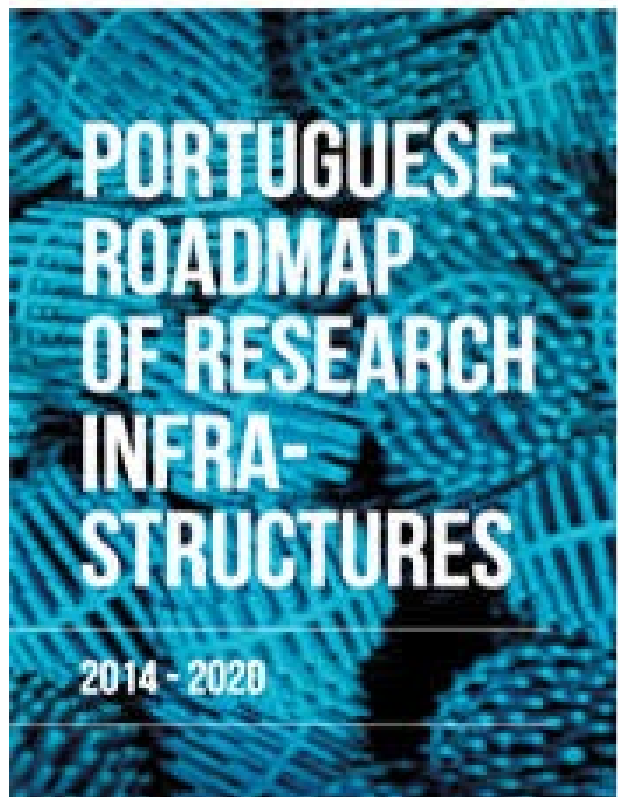
Physical sciences and engineering

Network of Extreme Conditions Laboratories (NECL)

Portuguese WindScanner Facility (WindScanner.PT)

Social Sciences and Humanities

Common Language Resources and Technology Infrastructure of Portugal (CLARIN.PT)





5 Competence Centres (CC) promoted by the Ministry of Agriculture:

- CC for the cork oak and cork
- CC for aromatic, medicinal and spicy plants
- CC for the stone pine and pinion
- CC for the fight against desertification
- CC for the Mediterranean diet



creation of economic
and social value

3 Colaborative Labs (CoLAB) promoted by the FCT:

- BIOREF – CoLAB for Biorefineries
- Smart farm – CoLAB for Digital Innovation in Agriculture
- Smart Hub Energy – CoLAB Smart Energy Services Innovation Hub



REN – Rede Rural Nacional

CNOIV – Comissão Nacional da Organização Internacional do Vinho e da Vinha



HCP – Health Cluster Portugal



Lisboa e-nova – Agência Municipal de Energia e Ambiente

ALER – Associação Lusófona de Energias Renováveis



ISPG – Instituto do Petróleo e Gás



A melhor ciência faz-se em CIÊNCIAS

The challenge is to do it even better



THANK YOU
FOR YOUR
ATTENTION!

NOW IS TIME TO HEAR ABOUT
OUR SCIENCE!