

# BioISI PostGrad Seminar Series



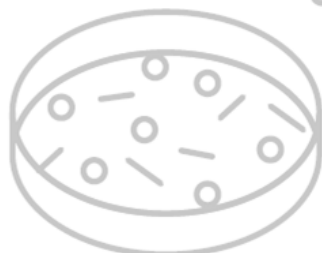
## A memória como condição para o sucesso da cooperação

David Sousa (PI: Luís Correia)  
Agent and Systems Modelling (MAS)



## An integrative system biology approach to delineate complex genotype-phenotype associations in Autism Spectrum Disorder

Muhammad Asif (PI: Astrid Vicente)  
Biomedical and Translation Research (BTR)



**When: October 12** 🕒 10h00-11h00

**Where: Building C3, Room 3.1.10**

Faculdade de Ciências da Universidade de Lisboa - Campo Grande, Lisboa (Portugal)

**BioISI** <http://bioisi.ciencias.ulisboa.pt/>

Contact: [bioisinfo@fc.ul.pt](mailto:bioisinfo@fc.ul.pt)

SRVL  
DKISIG  
QLVSLAT  
NLNAGCG  
DEGACT010  
LQATTG1010  
GCATA101010  
ATTG10101010  
AC01010100101  
00101010100101